

NOREL®
Dr Wilsz

YOUR PERSONAL
SKIN TRAINER

PRODUCT CATALOGUE

HOME CARE





PROFESSIONAL SKIN CARE

50 YEARS OF EXPERIENCE AND PASSION
FOR CREATION

Norel Dr Wilsz is an iconic brand of Polish cosmetics for **professional face and body care**. The brand has been present on the Polish market for over 50 years, continuously creating many unique cosmetics and treatment procedures for beauty salons and SPA.

Norel Dr Wilsz cosmetics are present and appreciated in 35 countries around the world!

For more than 25 years, the company has been headed by a biotechnologist, **Dr. Krystyna Wilsz**, who personally manages the laboratory and the research and development team, which includes experienced cosmetologists, technologists and dermatology specialists.

Over the years, the brand has been awarded many times by the pharmaceutical and cosmetology industries for innovative and effective solutions that made it a pioneer in the Polish cosmetology market, setting trends in skin care in many areas.





YOUR PERSONAL SKIN TRAINER

SPECIALIST COSMETICS - EFFECTIVE CARE

Norel Dr Wilsz cosmetics have very high care properties confirmed in research. This is guaranteed by unique formulas based on highly concentrated active ingredients and advanced liquid crystal technology (DMS), which ensures the highest biocompatibility of cosmetics with the human skin.

PROFESSIONAL CARE WITHIN REACH

Norel Dr Wilsz cosmetics are selected and appreciated in beauty salons in 30 countries around the world. Cosmetics for home care, which contain high concentrations of active ingredients and identical recipes as in professional cosmetics, are especially appreciated. These advanced home care cosmetics, apart from beauty salons, are also available in the Douglas perfumery in Poland.



Care of face, neck and décolleté

● Hyaluron Plus	6
● Antistress	8
● Acne	10
● Sensitive.....	14
● Lipid Repair.....	16
● MultiVitamin.....	18
● Face Rejuve.....	20
● Renew Extreme	22
● Atelocollagen	24
● Glow Skin	26
● Anti - Age.....	28
● Pearls and Gold	36
● Re-Generation GF.....	38
● Mandelic Acid	40
● Whitening	42
● ForMen	44
● Cleansing.....	45
● Skin Care.....	46
● Peelingi.....	48

Body Care

● Slimming cosmetics	50
● Body Care	54
● Bust and decollete skin care	55
● The problem of "heavy legs"	56
● Body Care	57
● Hand Care	58



Hyaluron Plus

Intensive moisturizing for all types of skin



Hyaluronic Cream Active Moisturizing

Intense and long-lasting moisturization provides the skin with correct tension and elasticity.

Prevents drying and flaking of the skin.

For dry and normal type of complexions.



● 50 ml
DK 213

Effects of **Hyaluron Plus** line:

- actively moisturizes and binds water in the epidermis
- smoothes, softens and gives the skin a long-lasting comfort
- rebuilds the skin's lipid coat - Strengthens the skin's protective barrier

Line recommended at any age.

Active ingredients:

Hydrovite[®] PLUS (low molecular weight hyaluronic acid, NMF, saccharides), plant ceramides, Plantasens[®] Mink Oil (cotton-seed oil, macadamia, squalane), vitamin E, allantoin, panthenol.



Hyaluron 3% Intensive Moisturizing Gel Serum

Serum maintains optimal hydration, firmness and elasticity of the skin. Smoothes and shallows superficial wrinkles. Improves the condition and appearance of the skin.

30 ml
DA 349

1 CARE

Hyaluronic Cream Moisturizing & Normalizing

Effectively moisturizes and complements the deficiency of moisture in the epidermis, normalizes the secretion of sebum. An ideal, light make-up base. For oily and combination complexions.

● ☾ 50 ml
DK 214



2 CLEANSING



Hyaluronic Cleansing Milk

Perfectly washes away impurities and make-up.

200 ml
DM 210



Hyaluronic Moisturizing Tonic

Tones, moisturizes and refreshes.

200 ml
DT 211

3 SUPPLEMENTARY CARE



Hyaluronic Mask Active Moisturizing

Creamy mask for dry and dehydrated types of skin, especially after sunburn - Intensively moisturizes, smoothes, soothes dryness and tension of dehydrated skin.

100 ml
DN 212



Active Moisturizing Eye Cream

Eye cream for people of all ages. Intensely moisturizes and smoothes.

15 ml
DZ 217



Mixed complexion is characterized by:

- Gloss - overproduction of sebum in the so-called T-zone (forehead, nose, chin)
- dilated "pores" - visible sebaceous glands
- blackheads

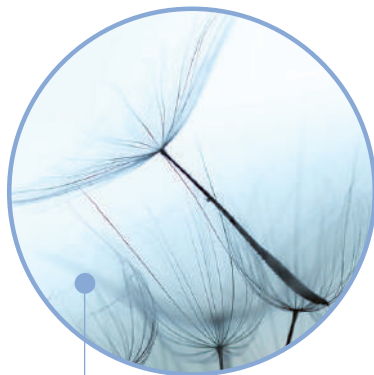
As a result of improper care with too degreasing cosmetics or after dermatological acne treatment, skin can become very sensitive and delicate. Usually it occurs in young people, but also after 30 years of age.

Effects of **Antistress** line:

- mattes and normalizes the production of sebum
- regulates the bacterial flora of the skin
- anti-inflammatory and brightening
- softens and improves healing of the skin

Active ingredients:

Sepicontrol™ A5 (cinnamon bark extract)
extracts of astragalus and liquorice, panthenol,
allantoin, tocotrienols, mattifying agent.



1 CARE

Mattifying Cream

Normalizes sebaceous glands and soothes irritations. Gives a silky, matt appearance.

● 50 ml
DK 251



2 CLEANSING

Normalizing Tonic

Moisturizes, soothes and decreases greasing of the skin.

200 ml
DT 128



3 SUPPLEMENTARY CARE

Moisturizing Eye Cream

Maintains firmness and elasticity of the delicate skin around eyes, reduces swelling and irritations. Effectively prevents premature signs of aging.

15 ml
DZ 250



Cleansing Gel

Deeply cleanses and normalizes.

200 ml
DZ 249



Acne

Care of oily and acne complexions



NEW



15% Night Acid Therapy For Acne And Oily Skin

Based on highly concentrated acids: mandelic 8%, lactobionic 2%, azeloglicine 5%, LHA 0,5%. It cleanses clogged and enlarged pores, reduces comedones and acne whiteheads. One month therapy already leaves the skin silky smooth, clean, soft and „luminous“.

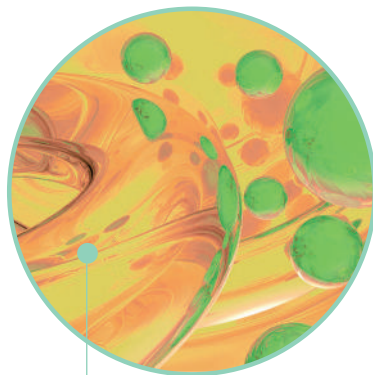
☾ 30 ml
DA 148

Effects of **Acne** line:

- inhibits the growth of bacteria and eliminates inflammations
- regulates keratosis of sebaceous glands
- anti-inflammatory, lightens discolorations
- softens and improves healing of the epidermis

Active ingredients:

colloid silver, azelaic acid, extracts of licorice root, Astragalus, willow bark, tricolor violet, marigold; allantoin, panthenol, tocotrienols, matting agent.



1 CARE

Anti-Imperfection Cream With LHA And Silver Ions

Significantly reduces blackheads and acne pimples. Cleanses, brightens and smooths problematic skin.

● 50 ml
DK 134



2 CLEANSING



Antibacterial Cleansing Gel

Deeply cleanses contaminated and problematic complexion.

200 ml
DD 150



Antibacterial Tonic

Tones and refreshes acidic pH - 5.0 reduces the growth of anaerobic bacteria.

200 ml
DD 149

3 SUPPLEMENTARY CARE

Antibacterial Gel Mask

Has a bacteriostatic, brightening and anti-inflammatory effect. Unclogs contaminated pores and reduces the formation of blackheads.

100 ml
DN 313



Antibacterial Spot Gel

Effectively eliminates inflammatory conditions and dries out purulent lesions.

10 ml
DD 151

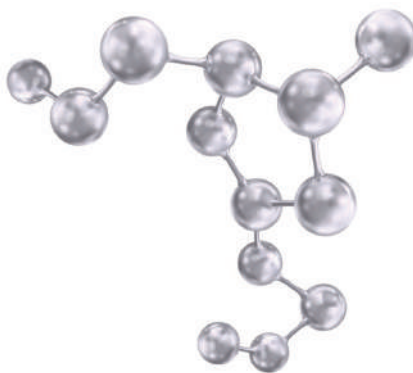
Acne

powerful weapon in the fight against acne

WHY SILVER IONS

Silver in cosmetics has very strong antibacterial properties. Now, for the first time in Polish cosmetics, positive silver ions have been used in a concentration of 5 and 10%.

After just one hour, they destroy the anaerobic bacteria *Propionibacterium acnes*, which are responsible for the development of purulent eczema.



SELECTED ACTIVE INGREDIENTS

each ingredient has an important role to play. Find out which! ... and these are only some of them ...

Ag-P Water - an aqueous solution of silver ions (Ag^+). They damage cell membranes and bacterial DNA, as a result of which they lose the ability to further multiply.

LHA - a derivative of salicylic acid with excellent penetration into the contaminated „pores“. Cleanses them, reduces blackheads and speeds up the healing of blemishes.

AC Sebum Control Enzyme PF - meadowsweet extract obtained with *Lactobacillus Ferment*. Inhibits the activity of the 5α -reductase enzyme that activates the work of sebaceous glands. Reduces the secretion of sebum and contracts enlarged pores.

Niacinamide, pyridoxine - B vitamins with anti-seborrhoeic, antibacterial and soothing properties.

NEW

ACNE DUO

Provides 24/7 care for problematic skin. Now our best-selling Cream for imperfections with LHA and silver ions has gained support in the form of a matting and normalizing emulsion. Both recipes contain positive silver ions, which makes them a powerful weapon in the fight against acne and skin imperfections.

Matting and normalizing emulsion

The ultra-light formula is quickly absorbed and is a perfect foundation for makeup. Effectively regulates the secretion of sebum and has an antibacterial effect. When used regularly, helps to reduce blemishes and blackheads. Provides a fresh, matte finish.

● 50 ml
DK 074



Cream for Imperfections with LHA and silver ions

The concentrated formula significantly reduces blackheads and accelerates the absorption of purulent acne breakouts. Cleans, smoothes and unblocks contaminated pores. The cream gives the skin softness, delicacy and definitely brighter, even color.

● ● 50 ml
DK 134



Sensitive

Care of sensitive, couperose and rosacea complexions



Moisturizing Cream SPF 15, Medium Protection

Light cream for every type of sensitive and couperose complexions. Moisturizes, soothes irritations and reduces redness of the skin.

● 50 ml
DK 030



Effects of Sensitive line:

- strengthens and elasticises blood vessels
- soothes irritations and redness of the skin
- brightens skin tone by reducing erythema
- improves regeneration and healing of the epidermis
- strengthens the epidermal barrier

Active ingredients:

mountain arnica, horse chestnut, routine, witch hazel, butcher's broom, vitamins E, C, hydroxyproline, allantoin, panthenol.

Facial Serum For Couperose Skin

Brightens, strengthens and inhibits the process of "cracking" of blood vessels. Soothes acne rosacea inflammations.

30 ml
DA 169



1 CARE

Vanishing Protective Cream

Strengthens capillaries, soothes irritations, nourishes and gently smooths the skin.

● ● 50 ml
DK 029



2 CLEANSING



Soothing Milk

moisturizes and gently washes away impurities.

200 ml
DM 013



Soothing Tonic

Tones, slightly brightens and relaxes the skin.

200 ml
DT 006

3 SUPPLEMENTARY CARE

Soothing

And Illuminating Mask

Creamy mask, calms and reduces redness of the skin. Soothing and anti-inflammatory effect eliminate dryness, itching and skin tension.

100 ml
DN 314



Eye Gel

For Sensitive Skin

Moisturises, reduces dark circles and puffiness around the eyes.

15 ml
DZ 046

Lipid Repair

Lipid skin repair

Lipid Repair Line Norel Dr Wilsz was developed for the special needs of the skin with protective barrier damage. It can be used also complementary to the dermatological treatments.

NEW



Skin tolerance – confirmed in tests with atopic eczema people.

Action – actively moisturises, strengthens skin barrier functions, supports saprophytic epidermis microflora.

Active ingredients – Inca Inchi butter, avocado oil, coconut, ceramides 3,6,II, I, cholesterol, phytosphingosine, squalane, urea, inuline, gluco – oligosaccharides, panthenol.

1 CARE

Lipid Moisturizing Cream

Cream for hypersensitive, dry and atopic skin, also during AD treatment. Fragrance-free, rich and at the same time gentle and non-sticky formula, provides the skin with strong hydration, regeneration and protection against irritation, dryness and itching. The concentrated formula provides the skin with a wealth of polyunsaturated fatty acids (omega 3, 6, 9) and alpha-tocopherol from Inca Inchi oil and ceramides 3, 6II, 1, cholesterol and phytosphingosine.



● 50 ml
DK 121

Lipid Soothing Therapy with 4% Ectoin®

Therapy for topical use in the exacerbation phase of AD, also during dermatological treatment. No steroids. Fragrance-free, ultra-rich W/O formula (water in oil) strengthens the skin's protective functions, soothes irritation, inflammation and itching from dryness. The unique composition based on 4% Ectoin® soothes allergy symptoms and atopic dermatitis.



30 ml
DA 122



2 CLEANSING

Lipid Cleansing Milk

Milk for dry, atopic and sensitive skin. Fragrance-free, enriched with panthenol and inulin, gently cleanses and strengthens the beneficial microflora and skin resistance. 10% Ceramides and oils (Inca Inchi, avocado, coconut) moisturize and replenish the missing lipids in the skin. The milk leaves the skin clean and smooth, without discomfort and irritation caused by washing.



200 ml
DM 123

3 BODY CARE

Hydro – Lipid Body Balm

Balm for hypersensitive, dry and atopic skin. The nourishing, fragrance-free formula spreads perfectly, leaving a delicate, velvety film that increases the level of hydration, regenerates and protects the skin of the whole body against dryness, flaking and itching.



250 ml
DB 124

MultiVitamin

Care of hypoxic complexion



Energizing Vitamin Sorbet

Refreshing, fat-free cream-gel for dry and oily skin. Rejuvenates, protects and significantly improves skin's tone, giving it a smooth, soft and radiant.

● ● 50 ml
DK 289



Effects of MultiVitamin line:

- provides ultra high protection against free radicals and photoaging
- rejuvenates, firms and strengthens the synthesis of collagen fibers
- oxygenates, refreshes and evens the skin
- gives the skin smoothness, freshness and radiant look.

Active ingredients:

multi-vitamin complex - vitamin A (retinol), B3, B6, C, E, F, provitamin B5, coenzyme Q10, extracts of lemon and mandarin, caffeine, lipopeptide, hydroxyproline, olive oil, grape seed oil, shea butter.

Nourishing Vitamin Mask

Provides the skin with vitality, rejuvenation and an extremely effective antioxidant protection. Oxygenates, regenerates and improves skin tone.

100 ml
DN 288



1 CARE

Energizing And Nourishing Vitamin Cream

Rich cream for comprehensive care of dry complexions. Deeply moisturizes, regenerates and improves the color of tired skin. Leaves the skin extremely smooth, soft and radiant.

● ● 50 ml
DK 290



2 CLEANSING

Ultra-Light Vitamin Lotion

Nourishing lotion with a liquid consistency, thoroughly cleanses the skin leaving it perfectly clean, soft and refreshed.

200 ml
DM 286



3 SUPPLEMENTARY CARE

Brightening Eye Cream

Rich, nourishing cream with the consistency of butter. Smooths, moisturizes, firms and energizes the delicate skin around the eyes. Enriched with caffeine and illuminating particles providing an optical effect of shadow and wrinkle reduction.

15 ml
DK 292



Illuminating Vitamin Tonic

Alcohol-free tonic with 5% lactic acid with a pleasant, fruity scent. Removes impurities, revitalizes and brightens, providing the skin with a healthy glow and smoothness.

200 ml
DT 287



Face Rejuve

Firming, illuminating, lifting



First signs of skin aging are:

- wrinkles, so-called crow's feet
- decrease of tension and elasticity
- diversified color
- signs of fatigue and loss of "radiance"

Accelerated aging of the skin is affected by: irregular lifestyle, stress, polluted environment, solar radiation and cigarette smoke.

Effects of Face Rejuve line:

- reduces and smoothes wrinkles
- tightens, firms and gently lift the skin
- revitalizes and strengthens blood vessels
- stimulates the synthesis of collagen
- intensifies the repair processes in the epidermis

The line is recommended even after 25 years of age in the state of accelerated skin aging.

Active ingredients:

cranberry extract (source antioxidants and stable vitamin C)

cranberry seed oil (source of omega 3, 6).

PEPHA® - TIGHT (extract of microalgae, pullulan), tocotrienols.



1 CARE



Cranberry Lifting Cream

Vanishing, cream-gel texture. Firms, lifts and gives the skin a fresh tone and healthy appearance.

● 50 ml
DK 172

2 SUPPLEMENTARY CARE



Cranberry Lifting Eye Cream

Tightens, the lifting and smoothes wrinkles around the eyes. Effectively regenerates and slows the aging process.

15 ml
DZ 171



Skin Tightening Cranberry Serum

It contains a quick and prolonged tension and smoothing "botox like" effect.

30 ml
DA 170

Renew Extreme

Skin care requiring
rejuvenation and illumination



According to dermatologists, skin ages as low as 25 years of age. The first signs of skin aging, gradually deepen without proper care.

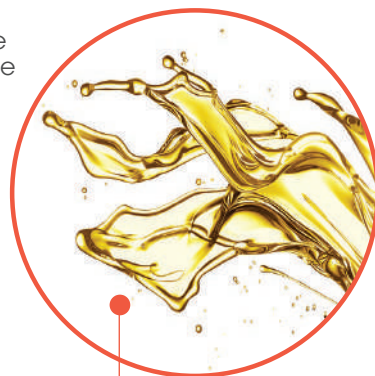
Effective anti-age effect will help slow down the aging process and undo the signs of aging, such as:

- wrinkles, furrows
- loss of firmness, elasticity and proper tension
- sun and "senile" hyperpigmentation
- gray, tired skin color.

Renew Extreme is an innovative, advanced skin care after 35 years of age, based on the synergistic action of three latest-generation active ingredients - **retinol**, **vitamin C** and **phytic acid**. The components demonstrate the highest effectiveness with simultaneous high tolerance for sensitive skin.

Effects of **Renew Extreme** line:

- rejuvenates and smoothes damaged epidermis
- shallows wrinkles, shapes the contours of the face
- provides gentle lifting effect
- lightens and illuminates the skin
- improves skin color and adds a youthful glow.



1 CARE



Retinol H10 - Triple Active Rejuvenating Cream

Rejuvenating night cream based on a light and at the same time highly regenerating formula. Precisely composed modern recipe provides a complex effect

- moisturizes, smoothes and returns its lost firmness and elasticity.

☾ 50 ml
DK 252

2 SUPPLEMENTARY CARE



Retinol & Vitamin C - Rejuvenating Serum

Silky, concentrated serum based on light oils for use as a restorative treatment for the night. It contains the highest concentration of retinol H10 and vitamin C *

- guarantee spectacular and rapid results
- rejuvenation, illumination and velvety smoothness of the skin.

☾ 10 ml
DA 256

* in Norel's Renew Extreme line products

AteloCollagen

Beauty from the sea depths



Collagen is the most important building material of human skin. It is responsible for its flexibility, durability and resistance to deformation. Unfortunately, with age, its amount decreases on average by about 1% per year, which successively heralds skin aging and the appearance of wrinkles.

The AteloCollagen line for the skin exposed to accelerated aging and oxidative stress (UV, smog, car fumes) provides the skin **with collagen and marine minerals** - necessary to maintain its young appearance.

Effects of **AteloCollagen** line:

- smoothes and moisturizes, making the skin incredibly soft and smooth to the touch like **the skin of a child**;
- covers the skin with a silky film and the delicate scent of white orange blossoms, bergamot and cyclamen.

Active ingredients:

atelocollagen, triple hyaluronic acid SMW, LMW and VLMW, vitamin C VC-IP, phytoplankton extract, rich in marine microelements deep sea water, babassu butter, taurine from Jania Rubens algae, extracts from salicornia, Iris, ginseng, grape leaves, L-Lysine, panthenol.



1 CARE

Smoothing Collagen Cream

A rich and light formula for dry, rough skin with signs of fatigue. Quenches the skin's thirst for many hours, instantly smoothes and is a strong injection of energy for the skin lacking vitality.

● ● 50 ml
DK 028



2 CLEANSING



Collagen Cleansing Gel

The washing base without soap, SLES and SLS does not dry out, leaving the skin clean, soft and smoothed.

200 ml
DZ 022



Collagen Tonic

A delicate tonic for dry and dehydrated skin. Moisturizes, smoothes, refreshes and remineralises.

200 ml
DT 023

3 SUPPLEMENTARY CARE

Collagen Serum

Hydro-gel concentrated face serum for all skin types with signs of fatigue. Provides instant results - silky smoothness, flattening of wrinkles and a clearly fresh and rested look.

30 ml
DA 026



Eye Booster Serum

Light, scentless serum under the eyes - stimulates collagen and provides the skin with a concentrated dose of moisture. Leaves the feeling of deeply moisturized and elastic skin and a refreshed look.

15 ml
DZ 027

Glow Skin

gray and tired skin, minor imperfections

WHY GLOW?

Complexion with a glow effect has been a strong trend for several years. Now, illumination is not only makeup, but also care, aimed at bringing out the natural glow of the skin from the inside. Because this kind of skin - radiant - looks healthy and definitely younger.

NEW

**GLOW
EFFECT**



Brightening Cream Glow Effect

Non-greasy formula with a delicate scent of tea rose, for all skin types. Micro-reflective pearl particles create a holographic glow on the skin that instantly covers up tired and dull skin. The effect - a moisturized, smooth and radiant complexion - immediately.

● 50 ml
DK 108

NEW

LUMINOUS AND SHINY SKIN

Brightening Active Serum

Ultra-light, non-greasy, refreshing texture for all skin types. The high concentration of active ingredients ensures long-term illuminating skin care. Effects - clean, uniform skin tone. Use a minimum of 4 weeks to compensate for disturbed skin pigmentation.

● 30 ml
DA 109



MULTI-TASKING ACTIVE INGREDIENTS

perfect synergy for a perfect complexion!

- **Heksyllorezorcynol®** - a modern substance four times stronger than hydroquinone, brightens the skin without irritation
- **Niacinamide** - vitamin B3, improves the color and appearance of skin with imperfections and signs of aging
- **Glycyrrhetic Acid** - glycyrrhetic acid from licorice root, moisturizes, soothes, brightens redness and discolorations
- **Witamina C VC-IP** - brightens the skin, stimulates collagen and strengthens blood vessels.

Anti-Age

Anti-wrinkle line, anti-age

Moisturizing & Firming Cream SPF 15

Moisturizes, softens and firms the skin.
Regenerates the skin and smoothes wrinkles.
For every type of mature complexion.

● 50 ml
DK 031



Effects of Anti-Age line:

- strengthens the immune system of the skin
- smoothes wrinkles and firms the skin
- slows the aging process of the skin
- deeply moisturizes and elasticises

Active ingredients:

regenerating extract of flowering plants (aralia, calendula, licorice, alfalfa, hibiscus, devil's claw), poplar buds, plant ceramides, hydroxyproline, shitake mushroom extract, vitamins A, E, C, panthenol, tocotrienols.



1 CARE

Regenerating Anti-Wrinkle Cream

Highly regenerates and intensifies the repair processes in the skin during sleep. For every type of mature complexion.



● ● 50 ml
DK 032

2 CLEANSING

Lotion-Tonic, Regenerating

Emulsion combining lotion and tonic effect. Gently and thoroughly washes away impurities and make-up. Leaves the skin clean and smooth.



200 ml
DM 014

3 SUPPLEMENTARY CARE

Relaxing And Regenerating White Tea Mask

Rich and creamy texture works remarkably calming and brightening. Silences "vascular game", soothes irritations, softens and elasticises the skin.

100 ml
DN 312



Intensively Regenerating Eye Cream

Removes signs of fatigue, protects delicate skin from aging.

15 ml
DZ 047



Anti-Age

Peptide smoothing of mimic wrinkles, firming

When does skin mature?

Skin aging is a complex process and it may take several dozen years from a subtle first wrinkle to a noticeable sagging skin. The first signs of aging may appear as early as around the age of 25. Responsible for this, among others mio-aging, i.e. skin aging caused by the work of facial muscles. Additionally the skin is constantly exposed to the negative influence of oxidative stress (free radicals).



Argireline®peptide

- NA modern neuropeptide that mimics the action of botulinum toxin (BOTOX®)
- Blocks the release of acetylcholine which is responsible for muscle contraction
- Reduces and prevents mimic wrinkles by relaxing the facial muscles
- Stimulates collagen synthesis, regenerates and firms the skin, perfect non-invasive and non-toxic alternative to botox

Lifting Peptide Active Cream

15% Rejuvenating cream elixir - your secret to smooth skin!

Our secret of a unique recipe

- **Argireline®peptide** – tightens, firms and reduces mimic wrinkles
- **Resveratrol** – a powerful antioxidant from red grapes, rejuvenates, brightens and illuminates
- **Hyaluronic acid** – saturates the skin with the right dose of moisture
- **White tea and grape leaf extracts** – a rich source of polyphenols and vitamin C - strengthens blood vessels and protect the skin against accelerated aging
- **Argan and Inca Inchi oils** – regenerate, smooth and give the skin a velvety softness
- **Vitamin E** – moisturizes, regenerates and protects the skin against free radicals.

Lifting Peptide Active Cream

Non-greasy formula with a delicate scent of tea rose. Light and nourishing at the same time, moisturizes, lifts and corrects expression lines for a long time. After just 14 days, the skin regains a refreshed and relaxed appearance, becomes smooth and radiant.

50 ml ● ●
DK 061



Anti-Age

Gentle acidic
wrinkle smoothing



World innovation in the care of mature skin,
with the problem of roughness, discoloration
and uneven structure - wrinkles, furrows and pores.

Applied for the first time in the world, **Skinperf LWG acids** - glycolic, lactic, citric, were closed in lamellar structures to ensure their gradual penetration of the skin for several hours. This form of release of fatty acids has enabled the use of lower, safer concentrations, ensuring both precision and total lack of irritation.

Active Ingredients:

2% Skinperf LWG acids, extracts of iris, ginseng and grape leaves
(source of antioxidants, isoflavones, vitamins and trace elements)
hyaluronic acid, argan oil, shea butter.

Smoothing Anti-Age Cream With AHA Acids And Extract Of Iris

Night cream, for each type of mature skin, also sensitive and couperose. Used regularly for a minimum of 4 weeks gives great effects:

- rich formula based on liquid crystal technology gives the skin an extraordinary silkiness and softness
- gently and carefully smoothes and evens rough skin
- Provides long-lasting feeling of comfort, moisture and elasticity
- reduces wrinkles and imperfections, the skin becomes noticeably more beautiful, extremely smooth and „radiant“.



◐ 50 ml
DK 118



Anti-Age

Non-invasive wrinkle fill



Wrinkle Filling Serum With Hyaluronic Acid Activator

Recommended after 35 years of age.

Serum regularly used:

- fills wrinkles non-invasively
- lifts and smoothes
- deeply and lastingly moisturizes, improving the condition and appearance of the skin
- improves firmness, elasticity and resilience

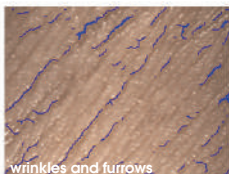
Skin regains its youthful vitality and radiance.

Active ingredients:

NovHyal® – recreates and stimulates the synthesis of hyaluronic acid,

Inovelo CAFA® – inhibits the excessive activity of hyaluronidase thus protecting forming hyaluronic acid from destruction,

Sodium hyaluronate – binds and complements the deficiency of moisture in the skin.



wrinkles and furrows

Survey of the skin before applying ProFiller serum, trainee 35 y.o.



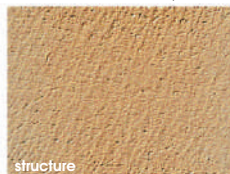
wrinkles and furrows

Survey of the skin after application of ProFiller serum for 10 days.
Results: tremendous smoothing out of wrinkles.



structure

Survey of the skin before applying ProFiller serum, trainee 35 y.o.



structure

Survey of the skin after application of ProFiller serum for 10 days.
Results: tremendous improvement of skin's structure.

In vivo studies were carried out on a group of 30 probands between the ages 25-52 years.

Excellent, innovative serum with highly moisturising properties for dehydrated, very dry, dry and sensitive types of skin.

Designed for use on the face and around the eyes.



30 ml
DA 373

Anti-Age

Pearls and Gold

**Luxurious care
of mature skin**



After 50 years of age the skin aging accelerates considerably, which is associated with a significant reduction in the amount of produced estrogen, that provides optimal skin hydration, lubrication and elasticity.

50+ mature skin as a result of ongoing changes:

- becomes flaky, thin and dry
- wrinkles deepen creating lines and furrows
- changes the face oval - collagen and elastic fibers are degrading, which results in the loss of proper skin support
- skin color becomes uneven – visible discolorations appear more often

Effects of Pearls and Gold line:

- strongly regenerates and strengthens the structure of the skin
- visibly reduces deep wrinkles and smoothes superficial wrinkles
- stimulates the synthesis of collagen and elastin
- tightens and firms the skin
- brightens the skin with golden highlights to provide immediate optical smoothing of wrinkles

Active ingredients:

pearl extract, colloidal gold, Rona Care® VTA (routine, hydroxyproline, vitamin C), abyssinian oil, panthenol, vitamin A, E, hyaluronic acid, gold micro molecules.



1 CARE



Vitalizing Cream With Colloidal Gold

Velvety, vanishing cream with gold particles. Soothes and regenerates. Regular use improves firmness and elasticity of the skin, smoothes wrinkles. Leaves the skin full of youthful "radiance".

● 50 ml
DK 078

2 SUPPLEMENTARY CARE



Vitalizing Eye Cream

Optimally moisturizes, smoothes and lightly nourishes the skin.

15 ml
DZ 051

Re-Generation GF

Power of regeneration
for mature skin



Advanced skin aging after 55 - 60 years of age require the use of sophisticated recipes.

The answer is Re-Generation GF, a line whose strength lies in highly-liquid crystal formulas and active ingredients.

Effects of daily care – the skin visibly smoother, stronger, radiant and wrinkles are shallower.

Active ingredients:

- **BIO-Placenta** - a combination of the five growth factors - IGF-1, EGF, acid FGF, basic FGF, VEGF and folic acid. Activate the growth of skin cells and stimulate the synthesis of collagen type I.
- **AstaTROL®HP** - astaxanthin, a powerful antioxidant - 6,000 times stronger than vitamin C. Protects the collagen matrix, anti-inflammatory and skin pigmentation brightening effect.
- **Der aktive Hydrolipid Komplex** (Hydrovance®, hyaluronic acid, Argan and Abyssinian oils) - moisturizes and gives the skin a silky finish.

1

SKIN CARE



Active Anti-Wrinkle Cream

Rich, concentrated cream provides the skin with long-lasting hydration and comfort for many hours.

It is the quintessence of luxury care, captivating fragrance and fully advanced recovery program for mature, demanding skin.

● 50 ml
DK 226

2

SUPPLEMENTARY CARE

Active Anti-Wrinkle Eye Cream

Soothing, fragrance-free cream provides a fine, mature skin around the eyes with all what the skin needs - strengthening, lifting, reduction of wrinkles and „bags“. Gaze regains its youthful appearance and glow.

15 ml
DZ 225



Active Anti-Wrinkle Serum

Silky-cream serum - the perfect balance of concentrated lightness and potency of the formula.

Stimulates the skin to renew and stimulate the production of collagen and elastin. The skin becomes more dense, firm and radiant day after day.

30 ml
DA 224



Mandelic Acid

**Brightening discolorations,
correction of imperfections**



Each skin type may have transient or permanent problems such as:

- discolorations, uneven color
- symptoms of fatigue, loss of “radiance” and freshness
- unsightly shine, enlarged pores
- blackheads
- wrinkles, furrows

Norel has created a line of skin care products with very high efficiency, which in a short time provide the skin with an incredible smoothness, illumination and freshness. Suitable for oily, mixed and dry complexions at any age.

Effects of Mandelic Acid line:

- exfoliates, smoothes and brightens discolorations
- reduces seborrhea, blackheads and acne lesions
 - Has antibacterial and normalizing effect
- reduces inequalities of the epidermis - enlarged pores, scars
- stimulates the synthesis of collagen and reduces wrinkles
- use at any time of the year, even in summer.

Active ingredients:

almond acid, polyhydroxy acids (gluconolactone, lactobionic), linseed extract, hyaluronic acid, allantoin, panthenol.



1 CARE

Lightening And Smoothing Cream With Mandelic Acid And PHA

Light with silky texture, to be used for the night. During the day use cream with UV filter.

☾ 50 ml
DK 367



2 CLEANSING

Cleansing Gel With Mandelic Acid

Refreshes and deeply cleanses oily and mixed complexions.

200 ml
DZ 368



Tonic Gel With Mandelic Acid

Alcohol-free, helps to remove dead skin cells, regulates bacterial flora of the skin.

200 ml
DT 369



Whitening

Care of complexion with hyperpigmentation



Melanin - the brown skin pigment - is formed by the enzyme tyrosinase, and the whole process called melanogenesis, is mainly stimulated by UV radiation. They form the skin and irregular pigmentation spots, giving the skin a tired, gray and unhealthy appearance.

Latest generation of **whitening cosmetics** does not only lighten discolorations of existing ones, but also prevent the formation of new ones.

Radiant complexion without spots looks healthy and definitely younger!

Effects of Whitening line:

- reduces the amount of melanin in the skin - clearly lightens spots and discolorations of various etiologies (chloasma, pigmentation scars arising with age or under the influence excessive sunbathing)
- increases hydration and skin's tension
- soothes irritations and reduces redness
- provides the skin with "radiance" and brighter, uniform color.

Active ingredients:

TEGO® Pep 4-Even (Tetrapeptide-30), Melavoid™, Emblica™, white mulberry, bearberry, AA2G™ (a precursor of vitamin C stable vitamin C), niacinamide (vitamin B3) Plantasens® Mink Oil.



1 CARE



De-Pigmentation Cream With Whitening Complex

Velvety night cream for all types of skin with hyperpigmentation problem. It inhibits the synthesis and activity of tyrosinase, which lightens pigmentation spots, evens uneven, overly yellow and sallow skin color.

In addition, the cream reduces redness, moisturises, softens and smoothes the skin.

Use for a minimum of 6 weeks.

☾ 50 ml
DK 203

2 SUPPLEMENTARY CARE

For everyday care we recommend Skin Care - Protective Cream SPF 30. It provides effective protection against UVA and UVB rays - a factor provoking the formation of hyperpigmentation.



Spot Discoloration Corrector

Concentrated serum for persistent discolorations. Reduces the intensity and number of spots, provides a unified, more even and healthy skin tone.

Use twice a day, applying the spot corrector on the blemishes.

Use for a minimum of 6 weeks.

15 ml
DA 202



Moisturizing Cream SPF 15, Medium Protection

Light cream for every type of male skin. It is easily absorbed and leaves no greasy film on the skin. Deeply moisturizes, strengthens and slows the aging processes of the skin.

● 50 ml
DK 324



Men's skin under the influence of male sex hormones - androgens, exhibits an increased tendency to over-production of sebum. Under their influence sebaceous glands are highly stimulated to work - skin shines excessively, shows tendency to form blackheads and pimples. As a result of shaving the skin is often irritated and flushed.

Daily care for men's skin should soothe irritations and „microinjuries“ aftershave, inhibit the aging processes and problems with greasing of the skin.

Active ingredients:

regenerating plant complex, plant ceramides, hydroxyproline, panthenol, allantoin, vitamin E, C, tocotrienols.



Cleansing

The basic step in the right skin care at any age is the thorough and yet gentle make-up removal. Only a thoroughly cleansed skin maintains a healthy appearance, and the active ingredients of creams and serums effectively penetrate into deeper layers.

Skin Care –

Gentle Cleansing Foam



Fluffy foam with fresh fragrance and natural pH 5.5. Gentle washing base that does not contain soap, SLS, SLES. Deeply yet gently washes away impurities and makeup from the skin of the face and eyes. Extracts of saponaria and calendula reduce irritations. Leaves the skin perfectly clean and refreshed.

150 ml
DZ 197

Active ingredients:

saponaria and calendula extracts, panthenol.

Skin Care – Micellar Clean-

sing water, face and eyes



Make-up removal for all types of sensitive skin and eye areas. Microscopic spherical micelles absorb dirt and excess sebum without having to rub the skin with a cotton swab. Ultra-mild, scentless formula moisturizes, soothes irritations and does not require rinsing. Leaves the skin clean and smooth.

200 ml
DM 033

Active ingredients:

panthenol and Aquaxyl™.



Skin Care

Protective creams SPF protection

Protective skin care should be adapted to the current weather conditions, the season and the individual needs of our skin.

In winter, at low temperatures and strong frosty wind, creams with a rich consistency are recommended, ensuring the strengthening of the lipid layer of the epidermis and thus the protective and insulating properties of the skin.



Norkol regenerating, fat, protective cream

For damaged, dry and very dry skin. Has a greasy formula and a pleasant, „warm“ fragrance. Regenerates, nourishes and protects the skin in difficult weather conditions.

Ingredients: vitamins A, E, lanolin, allantoin.

● 50 ml
DK 035

NEW

In summer, sunscreens are the most important in sunscreen creams to protect against harmful UVA and UVB radiation, causing stains and discoloration, burns and accelerated skin aging.

Protective Face cream SPF 50

Provides very high protection against UVA and UVB for all skin types, especially normal and combination skin. Light, perfectly absorbs and does not „white“. Protects the skin against accelerated aging and free radicals. Especially recommended after acid treatments with a tendency to discoloration and for people practicing outdoor sports.

Ingredients: photostable and transparent mineral and chemical filters UVA and UVB, vitamins C, E, bisabolol, atelocollagen, argan oil, mineral and chemical filters UVA and UVB, vitamins C, E.

● 50 ml
DK 039



Protective Face cream SPF 30

Provides high protection against UVA and UVB, for all skin types. Protects the skin against photoaging and discolorations. Provides the necessary protection after treatments with acid exfoliation and in use of night creams with acids.

Ingredients: photostable mineral and chemical filters UVA and UVB, vitamins C, E.

● 50 ml
DK384

ENZYMATIC PEELS

NEW FORMULA



Peelings

Exfoliation

Exfoliation of the epidermis quickly and visibly improves the appearance of the skin, smoothes and brightens it. **Significantly increases the absorption of active ingredients contained in creams, masks and serum concentrates.**



Enzyme peeling

For all skin types, including sensitive and couperose. It effectively and gently dissolves and removes dead cells of the stratum corneum.

100 ml
DP 084

Active ingredients:

pineapple and papaya enzymes.



Enzyme peeling with abrasive millispheres

For oily, combination skin with blackheads. Purulent eczema is a contraindication to use.

The peeling effect is enhanced by abrasive particles that mechanically exfoliate the skin with enzymes.

100 ml
DP 089

Active ingredients:

enzymes from pineapple and papaya, abrasive millispheres.



Skin Care – Sugar face peeling

Nourishing peeling based on gradually dissolving particles. For all skin types, except very sensitive skin, it exfoliates and cleanses dry skin and calous epidermis. Reveals smooth, moisturized and velvety-soft skin.

100 ml
DP 017

Active ingredients:

sugar crystals, 10% soybean oil, avocado, macadamia, beeswax.

Slimming cosmetics



Body imperfections – are a common cause of complexes, decrease of attractiveness and self-confidence. The long list of the most common defects of the body and silhouette are:

- cellulite - the so-called “orange peel”
- excess body fat
- stretch marks
- loss of firmness and elasticity of the skin.

For 15 years Norel has specialized in body care and support of the fight against its imperfections

The effectiveness of **Body Care** cosmetics comprises:

- synergic action of valuable active substances in the anti-cellulite complex
- potent stimulation of lipolysis processes - degradation of fatty deposits
- improves microcirculation, firmness and elasticity of the skin.





Body Slimming Cream With Anti-Cellulite Complex

200 ml
DB 076

- contains a highly concentrated 10% Anti-Cellulite complex
- helps to reduce cellulite and shapes the areas with an excess of body fat
- smoothes and brightens stretch marks
- has a rich texture and fresh scent of green tea

Massage intensively into the skin of the body.



Body Slimming Cream With Anti-Cellulite Complex For “Spider Veins”

200 ml
DB 079

- strengthens blood vessels and reduces their tendency to “crack”
- Recommended with “fragile”, shallowly located and prone to hemorrhage blood vessels
- tones and reduces the signs of cellulite
- smoothes and brightens fresh stretch marks

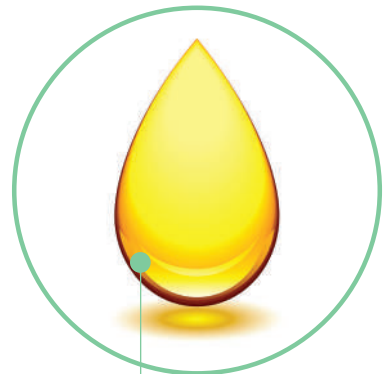
Gently massage the cream into the skin of the body (do not use warming massage).

Slimming cosmetics



Advanced **cellulite** requires the use of concentrated silhouette modeling cosmetics, that supports the reduction of fatty tissue and so called “orange peel”. It is most preferred to intensively massage them to stimulate circulation and “breaking down” fat deposits.

Norel cosmetics effectively stimulate lipolysis processes – breaking down of fats into free fatty acids, which then can be easily removed from the fat cells and used in metabolic processes.





Gluco Stop Gel With Fat Reducing Complex

200 ml
DZ 049

- reduces cellulite and supports body shaping
- improves firmness and elasticity of the skin
- unique plant extract is conducive to maintaining the balance between lipolysis and lipogenesis which eliminates the build up of unnecessary fat deposits.



Retinol Contra Cellulite Active Anti-Cellulite Gel

200 ml
DZ 050

- reduces cellulite and promotes slimming
- visibly reduces stretch marks, elasticises the skin
- a derivative of vitamin A contained in liposomes improves the tension and elasticity.

Body Care



Dry and dehydrated body skin needs not only hydration but also strengthening of the water-lipid barrier of the epidermis.

As a result of insufficient amounts of lipids (fatty components) the skin is often pinched, scaly and itchy.

- intensively moisturizes and regenerates
- leaves the skin soft and silky smooth
- for mature skin with signs of aging (flaccidity and dryness of the epidermis)

Regenerating Body Balm With Soya Extract

250 ml
DB 080



Active ingredients:

extracts from soy and alfalfa, grape seed oil, vitamin A, E, allantoin, panthenol.

Bust and decollete skin care



Breast skin is susceptible to flaccidity and loss of firmness, since the breasts are not supported by the muscles, but only by the skin. Breast skin is vulnerable to:

- sharp fluctuations in weight
- pregnancy, breastfeeding and menopause
- sunbathing
- mismatched underwear and stooped silhouette

Regardless of size, nice appearance of breast depends on the condition of the skin and the state of collagen and elastic fibers. Therefore, proper care plays a key role in maintaining a beautiful bust.

- strengthens, tones and tightens the delicate skin of breast, neck and decollete
- reduces and smoothes fresh stretch marks
- has a light texture and absorbs quickly
- gives the skin a silky smoothness and firmness

**Firming Cream-Gel For Bust,
Neck And Neckline**

150 ml
DZ 048



Active ingredients:

ivy, Japanese ginkgo, poplar buds, butcher's broom, algae, plant ceramides, abrotani, lavender extract, panthenol, vitamin E, sunflower oil.

The problem of "heavy legs"



The problem of "heavy legs" does not just affect elders or pregnant women but also more and more young people lead very active lifestyles, wearing improper footwear, have hormonal disorders.

Norel has created a product helpful in alleviating the consequences of impaired venous circulation e.g. edema, lymphatic stasis, "spider veins".

- improves microcirculation and lymph kinetics - eliminates lymphatic stasis and edema
- strengthens and "seals" the walls of blood vessels
- gently cools eliminating the feeling of "heavy legs"

**Cooling And Relaxing Gel
For "Heavy Legs"**

200 ml
DZ 141

Active ingredients:
extracts of horse chestnut,
hamamelis, arnica,
sweet clover, white tea,
yam, azadirachta,
marigold, menthol.



Body Care

Hand and foot care



Foot Cream With Urea Moisturizing And Softening

100 ml
DK 393

- moisturizes, softens and deodorizes feet
- prevents excessive keratosis of the skin
- relaxes tired feet

Active ingredients:

urea, grape seed oil, panthenol, green tea extract, vitamin A, lemon oil and lavender.



Nourishing Foot Cream Prevents Skin Cracking

100 ml
DK 394

- strongly softens, hydrates and regenerates
- protects feet from hardening and cracking of the skin
- soothes and promotes healing of microinjuries

Active ingredients:

licorice extract, soapwort, lavender, lanolin, panthenol, lavender oil, menthol.



Hand Cream Regenerating

100 ml
DK 036

- moisturizes, gently lubricates and eliminates roughness of the skin
- restores the lipid layer of the epidermis, forms a protective effect of an "invisible glove"
- use repeatedly during the day and after washing hands

Active ingredients:

lanolin, grape seed oil, sunflower oil, olive oil, vitamin A, tocotrienols.



Hand Care

PERFECT CREAM FOR HAND CARE

DRY, ROUGH SKIN



100 ml
DK 094

NEW



**RECOMMENDED
AFTER
DISINFECTION**



Strongly regenerating hand cream for skin dried and damaged by disinfection

- light, quickly absorbing formula
- soothes irritations and supports the natural resistance of the skin
- protects, regenerates and moisturizes damaged, sensitized skin
 - hands regain comfort, softness and smoothness.

Ingredients: 5% panthenol, allantoin, 1% Bioline (prebiotic), 5% ceramides, 0.5% cholesterol, 4% urea, linseed oil, lanolin, shea butter.

For irritated, dry and damaged skin, damaged by frequent washing and the use of alcohol-based disinfectants.

Note: Use multiple times a day, as needed.

24/7 HAND CARE

Hands are particularly exposed to the influence of weather conditions: frost, wind, sun. Additionally, we expose the skin of our hands (during washing and housework) to the adverse effects of detergents several times a day. The skin becomes dry, rough and prone to irritation.

Hand cream mask repairing – smoothing

- rich, delicately moisturizing formula
- strengthens the repair processes and supports the natural resistance of the skin
- strongly moisturizes and regenerates even very damaged and rough epidermis
- provides hands with incredible softness and smoothness.

Ingredients: 8% urea, 5% ceramides, 5% glycerin, 5% panthenol, allantoin, Bioline (prebiotic), vitamin A, glycyrrhetic acid, cholesterol, lanolin, shea butter.

**For damaged, dry and dehydrated skin
on hands and nails.**

NEW

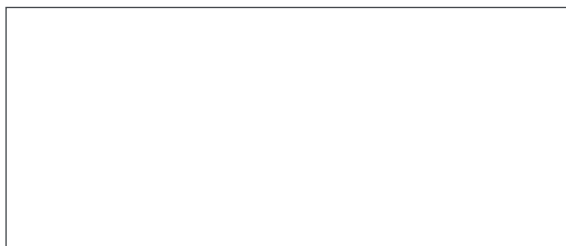
100 ml
DK 095



Note: Perfect for overnight use. Also recommended for dry and calloused skin of elbows, knees and feet.



**Cosmetics available
in beauty salons and SPA**



Your Beauty Salon

NOREL Dr Wilsz s.c.
www.norel.com